



PARAMOUNT
TARPAULIN INDUSTRIES

Your helping hand across the globe



Introduction

Paramount Tarpaulin Industries has carved a niche for itself in the international market with a wide range of products ranging from Tents and Tarpaulins, Blankets, Mosquito Nets, Jerry Cans, Buckets & Hygiene Kits etc. Initially manufacturing and exporting tents, the company's quality products quickly earned trust from across the continents. Today Paramount is not only exporting tents and tarpaulins worldwide but has become one of the largest source for blankets, mosquito nets, kitchen sets, jerrycans, buckets and dozens of other relief items. We are a trusted & reliable name since last six decades. We are always prepared and our global stock prepositioning of relief products enable us to cope with emergency situations timely and efficiently.

Paramount Tarpaulin Industries possesses a vertical production unit comprising of ultra-modern machines, skilled workers and qualified team of professionals and designers who together enable the company to build a reputed standing in the global market. Led by an efficient management, the enterprise has earned for itself a praiseworthy position within Pakistan and abroad.

Brief History

The firm started off as a facility which provided waterproofing for canvas fabrics. It was established in 1950 by four friends. After few years backward and forward integration took place which made it a vertical setup for producing high quality tents, tarpaulins, blankets and mosquito nets etc. It is a family run business but has always reengineered its processes according to the bench marks set by management gurus.





Mission & Vision

"Your Helping Hand Around The Globe."

To develop and manufacture state of the art relief products and work with the leading NGO's and government sector to provide emergency relief to millions of refugees affected by wars and natural disasters around the globe. We are committed to manufacturing and producing the highest quality products at the best possible value to our customers. It is our intention to provide shelter and tentage for recreational, disaster relief, and war rehabilitation purpose in military, domestic and foreign markets.

Infrastructure

Paramount Tarpaulin Industries possesses a vertical production unit comprising of ultra-modern machines, skilled workers and qualified team of professionals and designers who together enable the company to build a reputed standing in the global market. Led by an efficient management, the enterprise has earned for itself a praiseworthy position within Pakistan and abroad.

Our manufacturing process includes:

- Knitting
- Dyeing & Processing
- Printing
- Weaving
- Stitching
- Packing

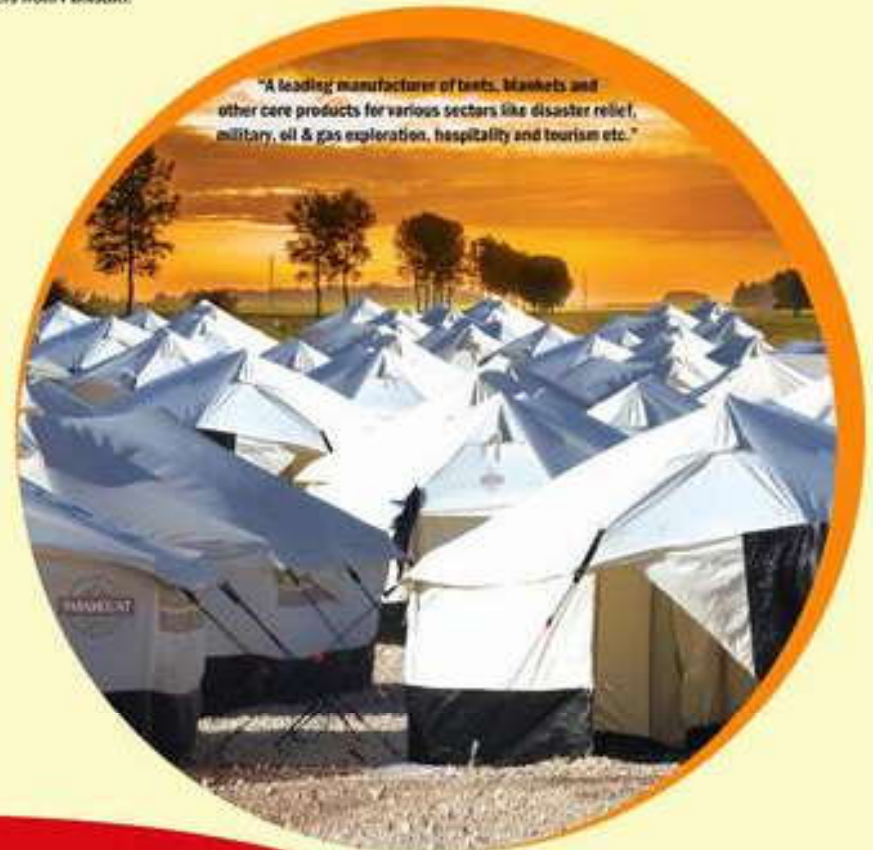
Products

We have wide range of products that are ready for shipments around the globe. We also maintain emergency stocks. The glimpse of our product line is given below:

- Tents
- Tarpaulins
- Canvas
- Blankets
- Mosquito Netting
- Jerry Cans
- Plastic Buckets
- Kitchen Sets
- Hygiene Kits
- High Visibility Vests
- Kit bags
- Food Packages
- Sleeping bags
- Coveralls & Aprons
- Ground sheets
- Leather Work wear & Safety Items
- All Kinds of Relief Items

Clientele

Our clients represent both domestic as well as international markets and most of the leading NGO's. At Paramount Tarpaulin Industries customer service and satisfaction is our number one priority. We believe in providing our customers real value for money and hence we supply quality products at highly competitive prices. Paramount Tarpaulin Industries, due to its quality products, has earned the accolades of its clients. We have widespread and satisfied client base all across the globe including leading international NGO's, Red Cross and Red Crescent Societies and UN Agencies. So you may rely on us as your reliable manufacturing partners from Pakistan.



"A leading manufacturer of tents, blankets and other care products for various sectors like disaster relief, military, oil & gas exploration, hospitality and tourism etc."

PARAMOUNT TARPAULIN INDUSTRIES



Certifications & Policies

Our reputation is determined by Collaboration, Commitment and Approach towards quality and responsibility. The quality of our products has fetched us great compliments from our judicious clients stretched in various countries. Quality has always been and will continue to be one of the main guiding principles of Paramount Tarpaulin Industries to achieve the target set up for its business. We are committed to environmental and social accountability. We have dedicated resources and functions in place to ensure that we stay fully compliant to highest industry standards.

Paramount has developed environmental and social programs in a comprehensive, systematic, planned and documented manner. It includes the organizational structure, planning and resources for developing, implementing and maintaining policies for quality control, environmental protection and corporate social responsibility.

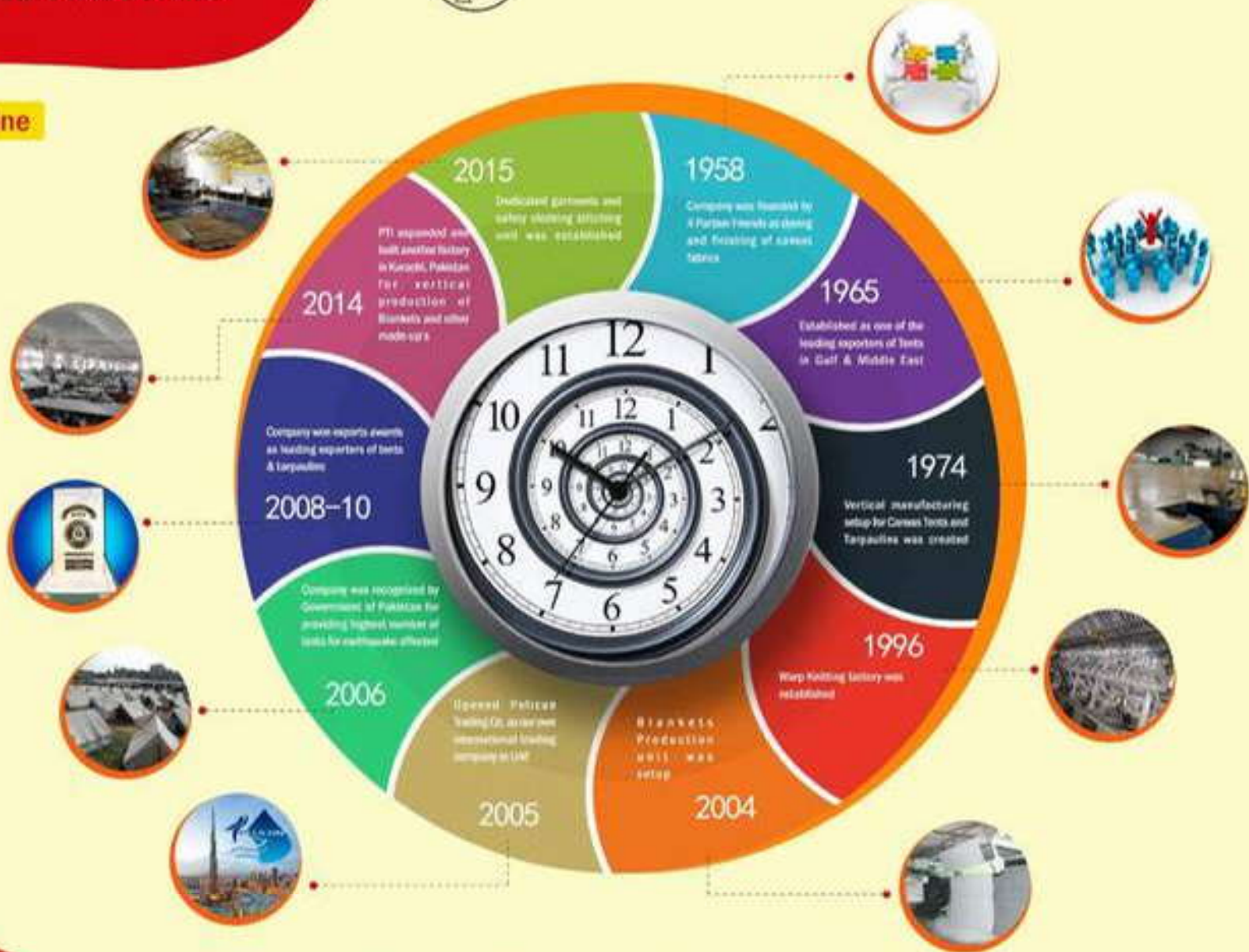


Your helping hand across the globe

PARAMOUNT TARPAULIN INDUSTRIES



Timeline



Your helping hand across the globe

PARAMOUNT
TARPAULIN INDUSTRIES



Factory Environment



Your helping hand across the globe

PARAMOUNT
TARPAULIN INDUSTRIES

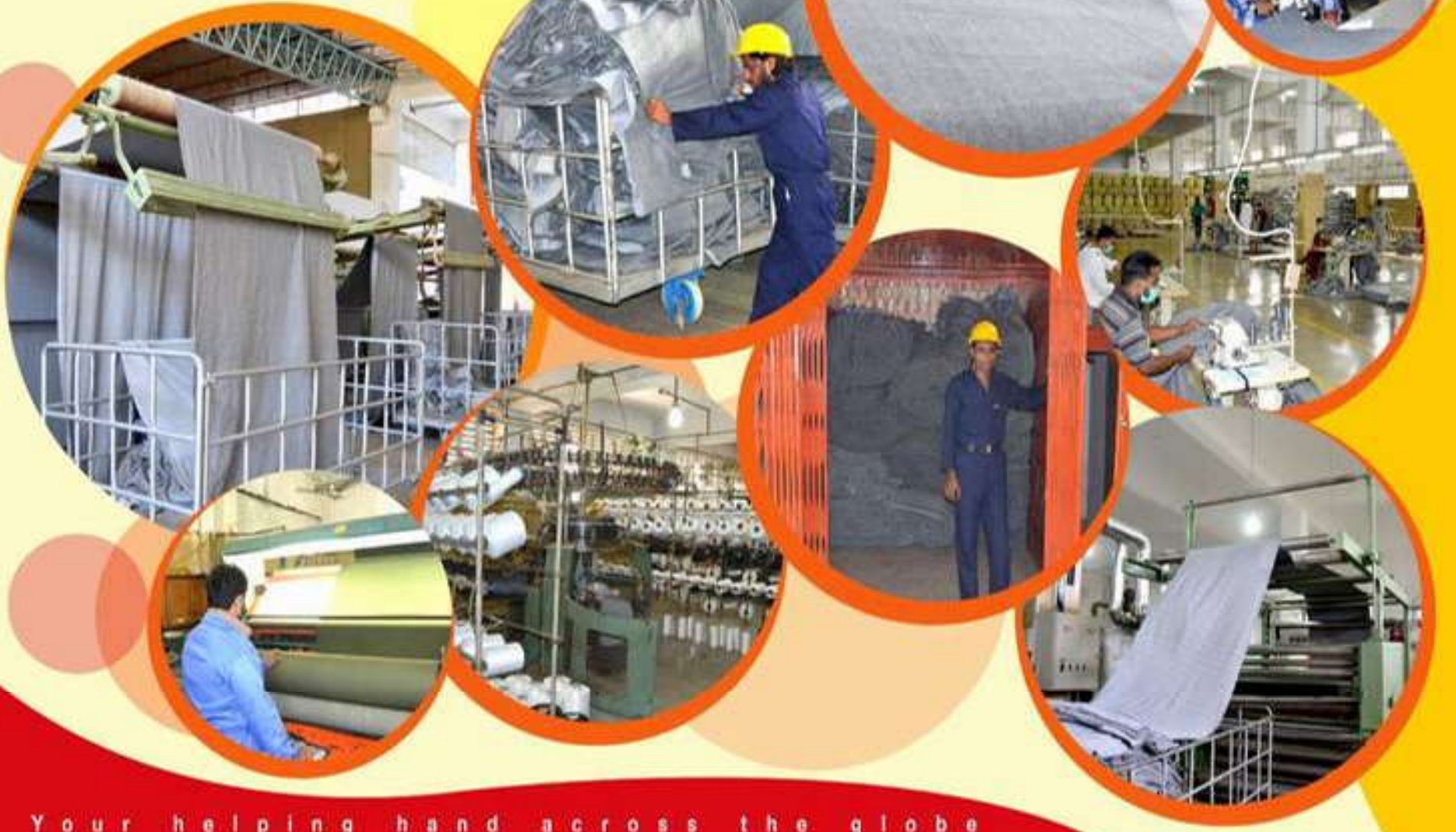


Your helping hand across the globe

PARAMOUNT
TARPAULIN INDUSTRIES



Factory Environment



Your helping hand across the globe

PARAMOUNT TARPAULIN INDUSTRIES



Your helping hand across the globe

Family framed tent (UNHCR/IFRC/ICRC TYPE)

Specifications

- Dimensions** Erecting System Centre height: 2.4m Width: 4.15m Ridge length: 4m Side wall height: 1.50m Door height: 1.6m
Centre base length: 5.2 m
- Front Door** Size: 1.5m width x 1.5m high Door flaps are 1.5m width x 1.6m high: - Upper part 1.6m width x 1.08m high is made of canvas. - Lower part 1.5m width x 0.52m high is made of woven PE fabric.
- Rear Door** Size: 1.0m width x 2.1m high Door flaps are 1.0m width x 2.1m high: - Upper part 1.0m width x 1.58m high is made of canvas. - Lower part 1.0m width x 0.52m high is made of woven PE fabric.
- Material**
- Outer Tent** Polyester and cotton blended fibres yarns. Cotton: 40% (±10), polyester: 60% (±10) i.e., 50 to 70% polyester, with balance in cotton. 350g/m² (±15%) in finished state.
- Inner Tent** Polyester and cotton blended fibres yarns cotton: 40% (±10), polyester: 60% (±10) i.e., 50 to 70% polyester with balance in cotton or cotton 100%. 130 g/m² ±10% in finished state.
- Ground Sheet** Made of Woven polyethylene fabric, coated on both sides with low density polyethylene (LDPE) 180 g/m² (±5%)
- Mud Flaps** Made of Woven, high density polyethylene black fibres, fabric laminated on both sides with low density polyethylene coating. Weight: 180g/m² (±5%).
- Inner Partition** One inner partition made of the same material as the inner tent.
- Doors** 02 Doors at front & rear. The doors can be closed by means of lacing/loop system.
- Windows** The outer tent has 6 windows, 5 with mosquito netting and a rain flap running on both sides of the tent and one on the back side. 1 small window with transparent polyethylene (PE) fabric on the vestibule.
- Chimney** A chimney reinforcement with non perforated opening is placed at side wall. This is made of heat resistant fabric (minimum 900°C).
- Ventilators** The outer tent has 2 ventilation openings in front and back with reinforcement netting and a rain flap.
- Frame** All frame parts are made of 25 x 1.2 mm thick galvanized or painted steel pipe.
- Accessories** One tent with all accessories packed into a master bundle. Other required accessories including assembling instruction, content list and repair kit included.
- Packing** One tent with all accessories is packed in one bundle. Total length is maximum 2250mm, approximate diameter is 300mm.



Packaging



Inner View



Side View



Packed Tent



Waterproof



Polyroof



UV Stabilized



UN/IFRC Recognized Labs





Family tent

(UNHCR/IFRC/ICRC TYPE)

Specifications

Dimensions

| | |
|--------------------------------------|-----------------------------|
| Useable Area | 26 m2 (approx.) |
| Outer Tent Including Vestibules | 6.50 x 4.00 m |
| Outer Tent Vestibules (Front & Rear) | 1.30 x 4.00 m |
| Inner Tent | 3.95 x 3.80 m |
| Wall Height | Outer: 1.25 m Inner: 1.15 m |
| Center Height | Outer: 2.20 m Inner: 2.10 m |
| Door Height | 1.4 m |

Material

| | |
|---|---|
| Outer Tent | Inner Tent |
| Roof: Made of natural colour 320 g/m2 polyester / cotton, rot proof & water proof bleed fabric. | Made of natural colour 130 g/m2 polyester / cotton, rot proof & water proof bleed fabric. |
| Wall: Made of natural colour 200 g/m2 polyester / cotton, rot proof & water proof bleed fabric. | |

Ground Sheet

Sewed ground sheet in tub made of PE fabric, 180 g/m2

Mud Flaps

Made of PE fabric 180 g/m2, 50 cm as wall & 20 cm as mud flap

Accessories

All required tools and accessories for ready use. Metal standing poles, Metal ridge poles, Iron hammer, pegs, ground pins, guy ropes & assembly instruction.

Doors & Windows

02 Doors at front & rear / 02 full length windows with flaps

Chimney

01 chimney opening, size 25 x 45 cm

Ventilators

02 ventilators, one on top of each vestibule

Packing

Complete Tent + Accessories in one bag. Net weight 55 Kgs (approx.) Volume per bundle: 0.16 cbm (approx.)



Packaging



Packed Tent



Inner View



Waterproof



Rotproof



UV Stabilized



UN / IFRC Registered Label





Ridge tent

(Double Fly Double Fold)

Specifications

Dimension:

| | | |
|----------------|----------------------|----------------------|
| Floor Area | 12.00 m ² | 16.00 m ² |
| Length x Width | 4.00 x 3.00 m | 4.00 x 4.00 m |
| Ridge Length | 4.00 m | 4.00 m |
| Central Height | 2.15 m | 2.15 m |
| Wall Height | 0.90 m | 0.90 m |

Frame

Galvanized steel poles of 47/48 mm diameter

Material

| | | | |
|------------------|---|------------------|--|
| Outer Fly | Single fold of 454 g/m ² water proof & rot proof canvas. | Inner Fly | Double fold of 454 g / m ² water proof & rot proof canvas. Inner fold made of dyed cotton lining. |
|------------------|---|------------------|--|

Color

Outer fly and outer fold of inner fly.
Natural canvas

Ground Sheet

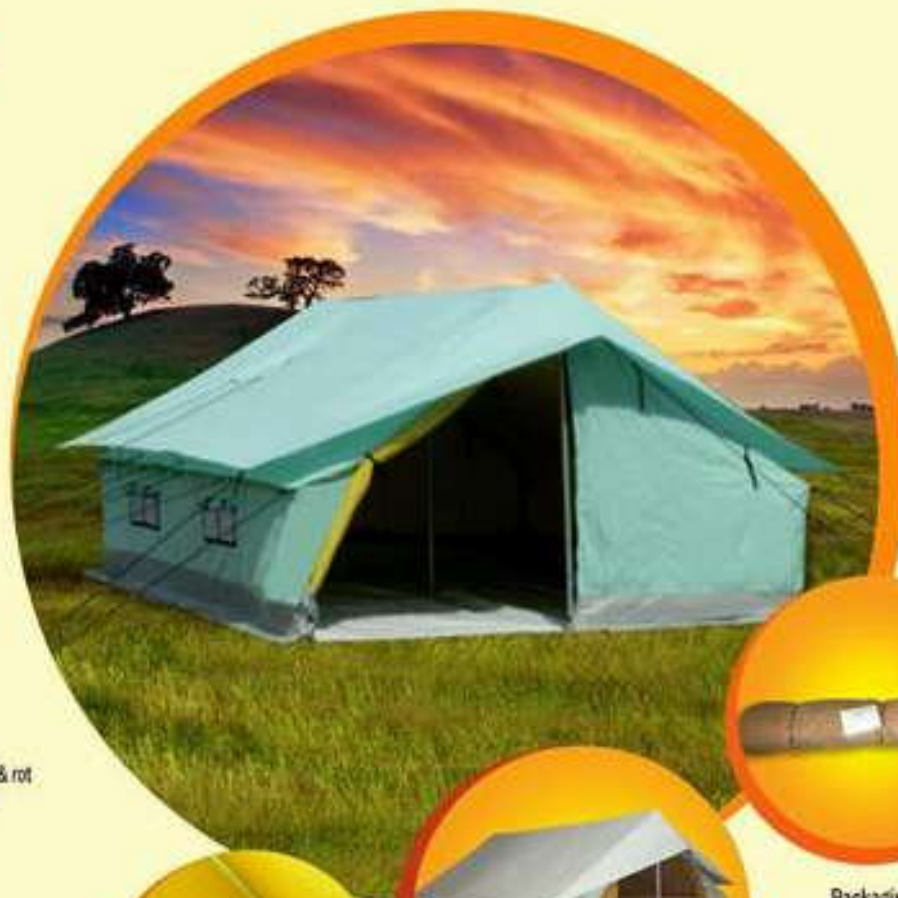
Separate sheet made of PE fabric. Size of the ground sheet is as per size of the tent.

Accessories

All required tools and accessories for ready use. Hammer, steel pegs, ground pins, guy ropes and repairing kit.

Shipping Information

| | | |
|----------------|--|--------------------|
| Weight | 4.00 x 3.00 m | 4.00 x 4.00 m |
| | 65.00 kgs (approx) | 70.00 kgs (approx) |
| Volume | 0.20 cbm (approx) | 0.24 cbm (approx) |
| Packing | Tent + Inner Tent + Accessories in one bundle. Wrapped in polythene & into PE limited cloth bag. | |



Packaging



Inner View



Outer View



Ridge tent

(Double Fly Single Fold)

Specifications

Dimension:

| | | |
|----------------|----------------------|----------------------|
| Floor Area | 12.00 m ² | 16.00 m ² |
| Length x Width | 4.00 x 3.00 m | 4.00 x 4.00 m |
| Ridge Length | 4.00 m | 4.00 m |
| Central Height | 2.15 m | 2.15 m |
| Wall Height | 0.90 m | 0.90 m |

Frame

Galvanized steel poles of 47/48 mm diameter

Material

Outer Fly

Single fold of 454 g/m² water proof & rot proof canvas.

Inner Fly

Double fold of 454 g / m² water proof & rot proof canvas. Inner fold made of dyed cotton lining.

Color

Outer fly and outer fold of inner fly.
Natural canvas

Inner

Yellow dyed.

Ground Sheet

Separate sheet made of PE fabric. Size of the ground sheet is as per size of the tent.

Accessories

All required tools and accessories for ready use. Hammer, steel pegs, ground pins, guy ropes and repairing kit.

Shipping Information

| | | |
|---------|--|-------------------------------------|
| Weight | 4.00 x 3.00 m 65.00 kgs (approx) | 4.00 x 4.00 m 70.00 kgs (approx) |
| Volume | 0.20 cbm (approx) | 0.24 cbm (approx) |
| Packing | Tent + Inner Tent + Accessories in one bundle. Wrapped in polythene & into PE limited cloth bag. | |



Packaging



Outer View



Inner View



ON (P) Recognized Label

Ridge Tent

(Single Fly, Single fold)

Specifications

| | | |
|---------------------|---|----------------------|
| Dimensions | Area | 16.00 m ² |
| | Size | 4.00 x 4.00 m |
| | Central Height | 2.00 m |
| | Wall Height | 0.90 m |
| Material | Made out of natural colour waterproof cotton canvas | |
| | Quality: 400 Gms/sq.mt | |
| Ground Sheet | 4x4 Mts made out of PE Laminated cloth. | |
| Mud Flaps | 20/25 cms at the bottom of wall made out of PE Laminated cloth | |
| Poles | 2 standing poles of 2 Mts high and 1 Ridge pole of 4 Mts(Folding) made out of iron pipe painted in solid colour | |
| Accessories | 10 iron pegs,10 iron pins and 1 iron hammer with wooden handle. | |
| Packing | Complete Tent + Accessories in one bundle. | |



Packaging



Inner View



Outer View



UK / ENF Recognized Label

Lightweight Multipurpose Frame Tent 24m² (UNICEF TYPE)

Specifications

| | | |
|---------------------|--|---|
| Dimensions | <p>Usable Area length x width Center Height (Inner Tent) Wall Height (Inner Tent)</p> | <p>24 m² (approx.) 6.00m x 4.00m Outer: 2.80 m Inner: 2.30 m Outer: 1.95 m Inner: 1.80 m</p> |
| Material | <p>Outer Tent Fabric and Mesh Flap 450-550g/m², PVC coated fabric, waterproof, 5000mm, fire retardant CPAI, rot proof and durable.</p> | <p>Inner Tent 120g/m² polyester/cotton blend fabric.</p> |
| Ground Sheet | <p>PVC Fabric: Sewed in bathtub ground sheet of 190g/m², Polyethylene (PE) fabric waterproof 5000mm, rot proof and durable. Double stitched to inner tent, the stitching of the ground sheet to the tent is about 100-200mm above the ground.</p> | |
| Color | <p>Outer Tent: Natural white Inner Tent: Natural white Ground Sheet: Light grey or Natural white</p> | |
| Seams | <p>All seams are double stitched and male roof seams are welded.</p> | |
| Doors | <p>2 doors (1.00m x 1.80m) in each tent i.e. one on each gable end side. Doors are closed with velcro</p> | |
| Windows | <p>6 windows on the long sidewalls, with reinforcement of PVC stripes on the mesh. The size of the windows (width x height) is 0.85m x 0.85m. 4 windows on the short sidewalls, with reinforcement of PVC stripes on mesh. The size of the windows (width x height) is 0.70m x 0.85m.</p> | |
| Main Frame | <p>35 silver colored frame pipes of aluminium with a diameter of 30.80mm and a thickness of 2mm. 10 silver colored frame connectors of steel with a diameter 35mm and a thickness of 1.50mm. 12 silver colored frame connectors of steel, including base plates, with a diameter of 35mm and a thickness of 1.50mm. The base plate size is 100mm x 100mm and has a thickness of 2mm. 4 silver colored lashing connectors of steel with a diameter of 8mm, including 2 hooks on each end.</p> | |
| Accessories | <p>All required tools and accessories including 30 pegs made of twisted steel with a diameter of 12mm, length of 400mm, 1 hammer of 2kg weight. Repairing kit consists of a 0.50m² of PVC fabric, 2.00m double side sticking tape, 2 pieces of needles and 20.00m of sewing thread.</p> | |
| Markings | <p>Detailed assembly instructions are included with sequential pictures. UNICEF Logo to be printed in black color on both grille ends as well as on both sides of the fly sheet.</p> | |



Back View



Inner View



Side View



Packaging



Waterproof



Rotproof



UV Stabilized



UN / IFRC Recognized Logo





Multi-purpose tent

Specifications

Dimensions

| | |
|------------------|---|
| Outer tent | |
| Total size | 6.00 m x 5.62 m |
| Ridge height | 3.00 m |
| Side wall height | 2.10 m |
| Doors | 1 door each side |
| Ventilation | Two ventilation windows each long side, one each gable end |
| Inner tent | |
| Total size | 5.70 m x 5.33 m |
| Ridge height | 2.80 m |
| Side wall height | 1.95 m |

Material

| | |
|------------------|--|
| Outer tent roof | polycotton blended fiber yarns 440 gsm |
| Outer tent walls | polycotton blended fiber yarns 320 gsm |
| Mud flaps | PVC coated fabric polyester 1100 dtex, PVC coated two sides 540 gsm |

Workmanship

All seam double stitched & stressed points reinforced

Accessories

Complete steel galvanized steel frame structure 30/1.5 MM, iron hammer, iron pegs, ground pins, guy ropes etc

Stitching

All seams are double stitched & stress points reinforced

Packing

Packing in 2 strong PVC bag (packed on pallets)



Packaging



Inner View



Back View





Dispensary Tent (ICRC / MSF Type)

Specifications

| | | | |
|------------------------------------|---|------------------------------|----------------------------|
| Dimension: | Dimension | 5 x 5.5 m | 7.5 x 6 m |
| | Useable Area | 27.5 m ² (Approx) | 45 m ² (Approx) |
| | Central Height | 2.5 m | 3 m |
| | Wall Height | 1.8 m | 2.11 m |
| Fabric Material | Made of polyester cotton canvas water, rot proof + UV resistance 440 g/m ² (+/- 5%) | | |
| Ground Sheet & Mud Flap | Optional : Made of 540 g/m ² (+/- 5%) PVC Both side coated Fabric | | |
| Partition | Optional : Inner Separation with the same tent Fabric 440 g/m ² PC canvas | | |
| Workmanship | All seam double stitched & stressed points reinforced | | |
| Accessories | Complete steel galvanized steel frame structure 30/1.5 MM, Iron hammer, Iron pegs, ground pins, guy ropes etc | | |
| Stitching | All seams are double stitched & stress points reinforced | | |
| Packing | Packing in strong PVC bag (packed on pallets) | | |



Size: 7.5 x 6m



Size: 5 x 5.5m

Outer View



Waterproof Rotproof UV Stabilized



Hospital / School Frame Type Tent

(Double Fly, Double fold)
(UNHCR / UNICEF Standard)

Specifications

Dimensions

| | |
|------------------|----------------------|
| Area | 72.00 m ² |
| Size | 12.00 x 6.00 m |
| Outer Fly Height | 4.30 m |
| Center Height | 4.00 m |
| Wall Height | 2.00 m |
| Outer Fly | Inner Fly |

Material

| | |
|--|---|
| Single fold of 454 g/m ² cotton/polyester blend waterproof & rotproof canvas. | Double fold, where outer fold is made of 454 g/m ² cotton/polyester blend waterproof & rotproof canvas. Inner fold is made of 150 g/m ² dyed cotton lining. |
|--|---|

Colour

| | |
|---------|--------|
| Outer | Inner |
| Natural | Yellow |

Frame

Complete frame of galvanized steel poles of 48 mm diameter. Canopy and outer fly poles are of 25 mm diameter.

Ground Sheet

Separate sheet made of 200 g/m² PE fabric. Size of the ground sheet is as per size of the tent.

Mud Flaps

PVC/PE mud flaps all around the tent.

Packing

We offer 2 different types of packing of your choice, wooden crates or bale packing.



Packing



Inner View



Outer View



UN / IFRC Registered Logo

All Winterized Frame Tent

(UNICEF Standard)

Specifications

Measurements

Usable Floor Area 40.00 Square Meter.
Center Height 3 M
Length x Width 5.00 x 8.00 M
Outer Fly Height 3.30 M
Wall Height 2.0 M

Frame

Complete frame of Painted iron poles of 50 mm diameter.

Material

Upper Fly:-Made of HDPE fabric of 250 g/m2. Size of the Fly sheet to be over sized by 50 cm compared to outer tent.
Outer Fly:-Single fold of 454 g/m2 waterproof & rot proof canvas.
Inner Tent:-Double fold, where outer fold is made of 454 g/m2 & rot proof canvas. Inner fold is made of dyed cotton lining of 120 g / m2.
Insulation Layer:-Both Outer folds: Made of breathable material, basic weight of 120 to 130 g / m2.
Middle fold: Made of 130 g / m2 polyester felt filling.
All three folds stitched together as quilt.

Colour

Outer Fold of Inner Tent:-Natural Canvas
Inner Fold of Inner Tent Roof:-White
Inner Fold of Inner Tent wall:-Yellow
Insulation layer:-2 Outer folds: White Middle fold: Natural

Ground Sheet

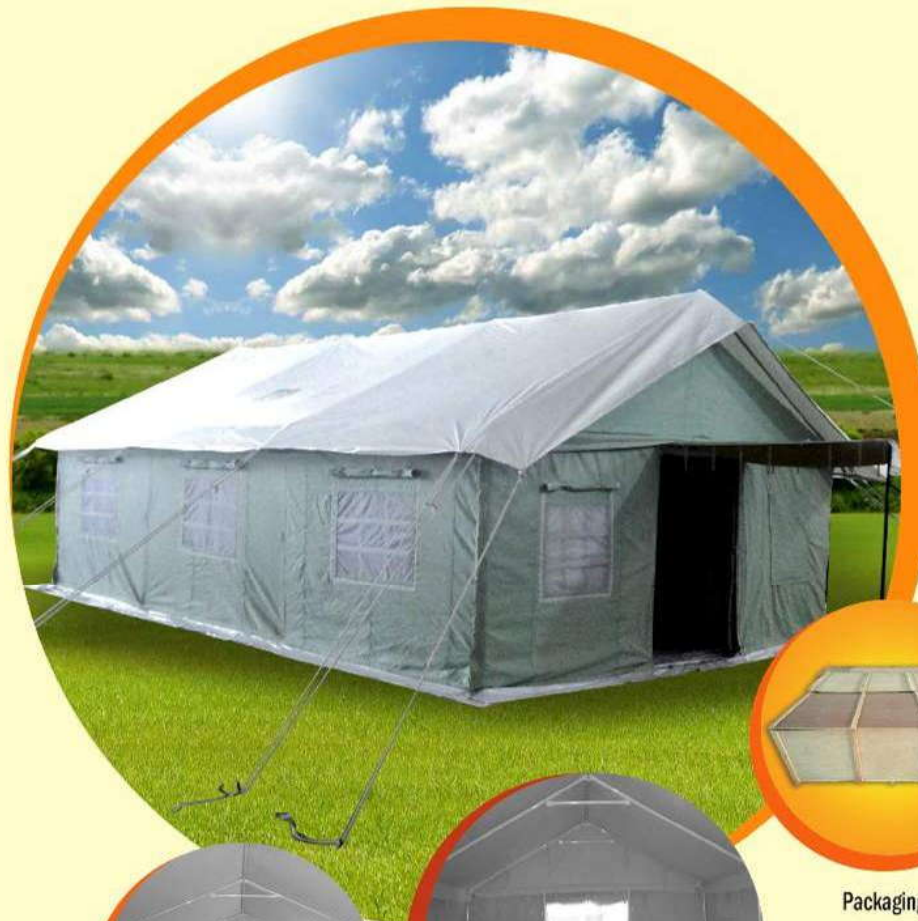
Separate sheet made of HDPE fabric of 200 g/m2. Size of the ground sheet is as per size of the tent.

Accessories

All accessories & tools for ready use, Painted iron frame, Painted Base plates, Painted Joints, Painted Iron pegs, ropes with steel runners, Iron Hammer with strong wooden handle, Repairing Kit and Instruction Manual.

Packing

Package A: Outer Fly + Ground Sheet + Fly Sheet.
Package B: 8 walls pieces
Package C: 12 Standing Poles
Package D: 9 Ridge beams + 4 door support poles
Package E: 8 Ride Beams + 6 Front Door Poles
Package F: 16 + 1 Repair kit + Assembly instructions + 01 Hammer + 14 Pegs + 26 Pins + 1 Wrench
Total: 6 Bales for 1 Tent.



Packaging



Inner view with insulation layer



Inner view without insulation layer



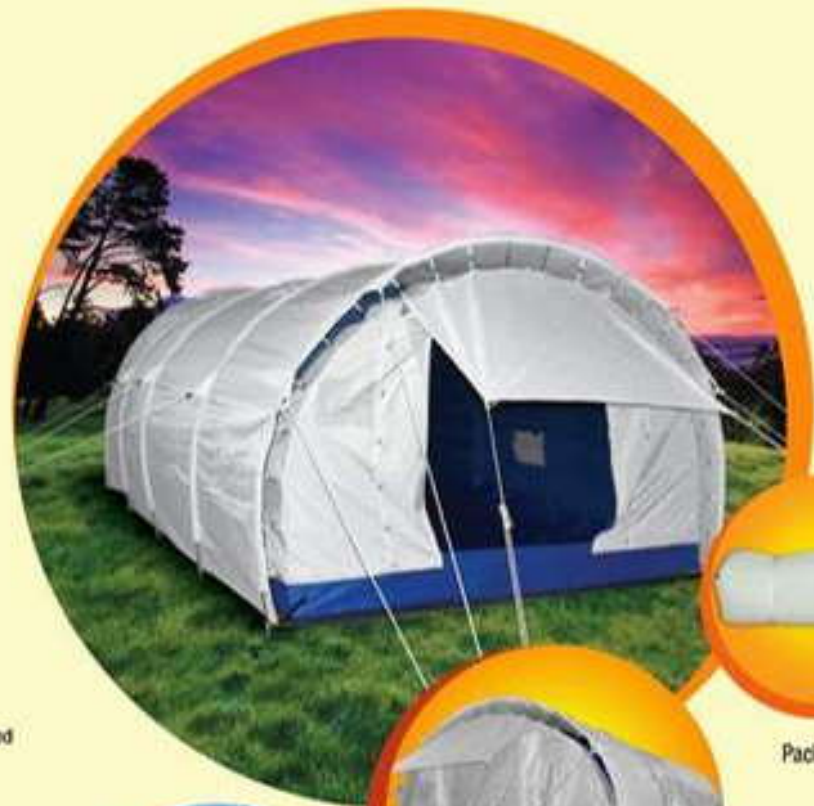
UN / IFRC Recognized Labs



Light Weight Emergency Tunnel Tent (LWET)

Specifications

| | | |
|-----------------------------|--|--|
| Dimensions | Usable Floor Area Length x Width Central Height Wall Height | 16.50 m ² 5.50 x 3.00 m 2.10 m Tunnel Shaped |
| Frame | Fiber Glass, 15 mm diameter | |
| Material | Outer Shell 180 g/m ² waterproof, rotproof and UV stabilize polyester fabric. | Inner Tent 130 g/m ² cotton / polyester blend dyed fabric. |
| Color | Outer Shell White | Inner Tent Blue |
| Ground Sheet | Sewed in bathtub ground sheet of 200 g/m ² PE fabric conforming UN standards. | |
| Accessories | All required tools and accessories for ready use. Hammer, steel pegs, ropes & repairing kit. | |
| Shipping Information | Weight Volume Packing | 42.00 kgs (approx) 0.14 cbm (approx) Tent + Inner Tent + Accessories in one bundle. Wrapped in polythene & into Hessian cloth. |



Packaging



Outer View



Inner View





Deluxe Tent

(Single Fly, Double fold)

Specifications

Dimensions

Size 10.00 x 5.00 m
Central Height 3.00 m
Wall Height 2.00 m

Material

Outer Fold Made of breathable 100% waterproof cotton canvas.
Inner Fold Made of Inner Lining of dyed yellow cotton cloth.

Frame

Galvanized metal poles.

Ground Sheet

Separate groundsheet made of PE Laminated PP fabric to fit the size of tent.

Mud Flaps

PE mud flaps all round the tent.

Accessories

Metal standing poles, metal ridge poles, metal sticks in walls, Iron hammer, Iron pegs, ground pins, guy ropes etc

Doors & Windows

4 Doors & 4 windows with flaps

Packing

Complete Tent + Accessories in bundles. Packed in weatherproof PP Bags

Available Sizes

4x4 Mts, 6x4 Mts, 8x5 Mts, 10x5 Mts, 12x6 Mts, 14x8 Mts etc.



Packaging



Outer View



Inner View



ISO 9001:2015
ISO 14001:2015
SGS
IN / IFC Recognized Labs



Winterized Tent

Specifications

Heavy Duty Winterized Tent: (DESCRIPTION DOUBLE FLY, WINTERIZED TENT Heavy duty winter tent. Ideal for longer use even in extreme cold weather conditions.

Made from Cotton Canvas Waterproof 400 or 450 gms per square meter natural white or olive green. Complete with metal poles, iron pegs and a carrying bag. With PVC Ground sheet to fit tent with an additional PVC Flysheet).

OUTER TENT FABRIC 450 Gms/m² Water & Rot Proof Poly Cotton:
INNER TENT FABRIC 200 Gms/m² Cotton. COLOR Natural Canvas

GROUNDSHEET: Made of PVC Sewed in Bathtub to fit inner tent:
MUDFLAPS: Made of PVC Stitched on Outer Tent.

DOORS / WINDOWS 2 Doors and 2 Windows
ACCESSORIES Metal Poles, Pegs, Pins & Hammer



Packaging



Inner View



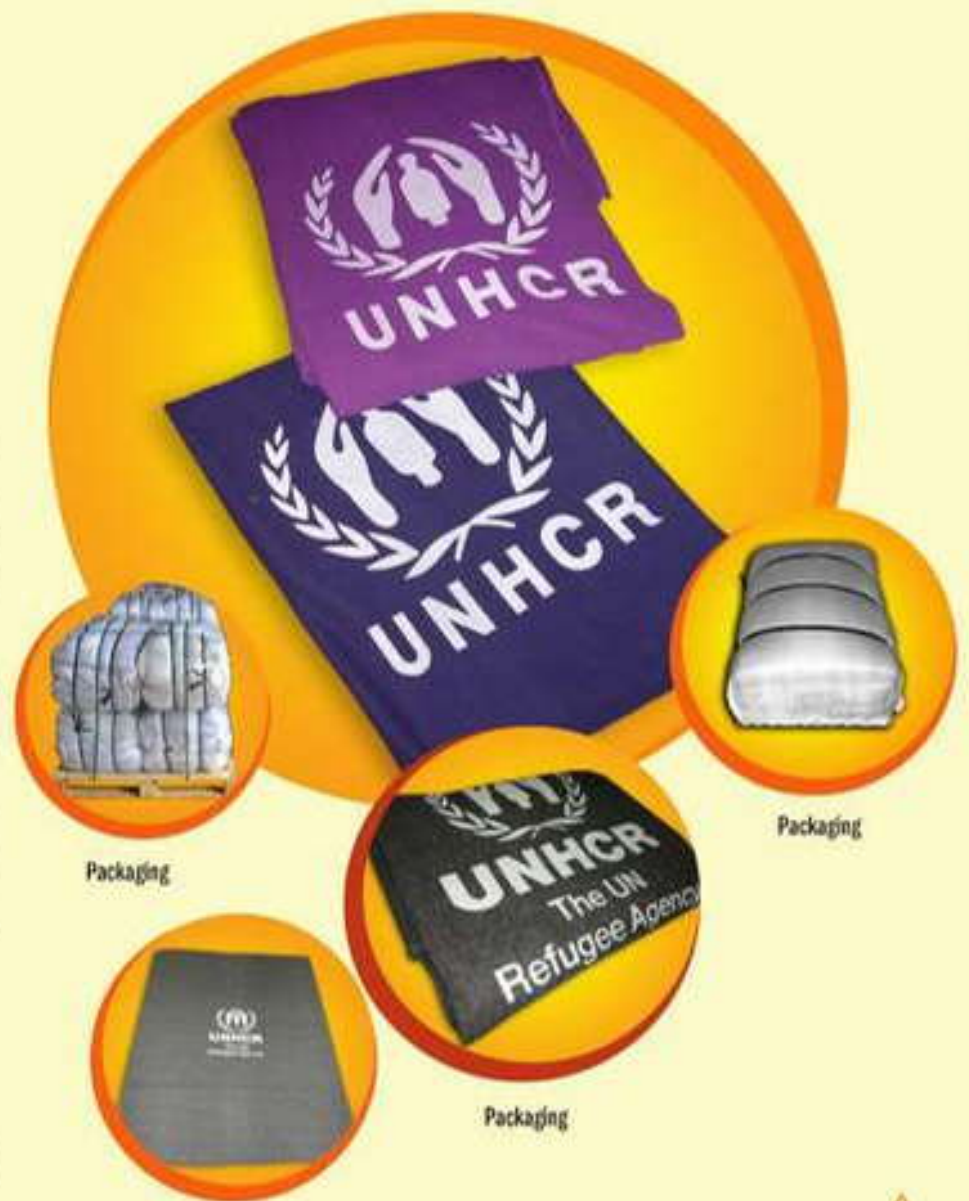
Outer View



Blanket, Synthetic (Fleece)

Medium Thermal (UNHCR / IFRC / ICRC TYPE)

| | |
|----------------------------------|---|
| Material | Synthetic blankets are made of virgin fibers from polyester or acrylic materials. Some cotton may be included in the yarns. |
| Make | Knitted or woven, dry raised both sides. Homogeneous, in one layer only. |
| Content | On dry weight, 100% virgin polyester and/or acrylic fibers or polyester/cotton. |
| Dimensions / Size | 150 x 200 cm +3% / -1%. To be taken on flat stabilized sample, without folds. |
| Weight | 350 to 670 g/m ² Weight determined by total weight/total surface. |
| Thickness | 3 mm minimum (1 kPa on 2000 mm ²). |
| Tensile strength | 250 N warp and weft minimum. Maximum 5% warp and weft after 3 consecutive machine washing at 30°C and one flat drying. |
| Shrinkage | Maximum 5% warp and weft after 3 consecutive machine washing at 30°C and one flat drying. |
| Weight loss after washing | Maximum 5% after 3 consecutive machine washing at 30°C and one flat drying. |
| Thermal resistance | TOG 2.5 (or 0.25 m ² K/W) minimum, rounded to the nearest 0.1, passed on samples picked from compressed bales after 3 consecutive machine washing at 30°C and one flat drying. |
| Resistance to air flow | Maximum 1000 L/m ² /s. |
| Finish | Whipped seam at 10 mm from the edge with 10 to 13 stitches/10 cm or stitched ribbon or hemmed on 4 sides. |
| Organoleptic test | No bad smell, not irritating to the skin, no dust, 4<pH<9. Free from harmful VOC (Volatile Organic Components). Fit for human use. |
| Fire resistance | Resistance to cigarette - No ignition. |
| Fire resistance | Resistance to flame - No ignition. |
| Colors | Other than black, red, or white, dark uniform color (i.e. dark blue, grey or brown). |
| Packing | Synthetic blankets are packed in bales of 20 pieces and the gross weight per bale is approx. 25 kg. |



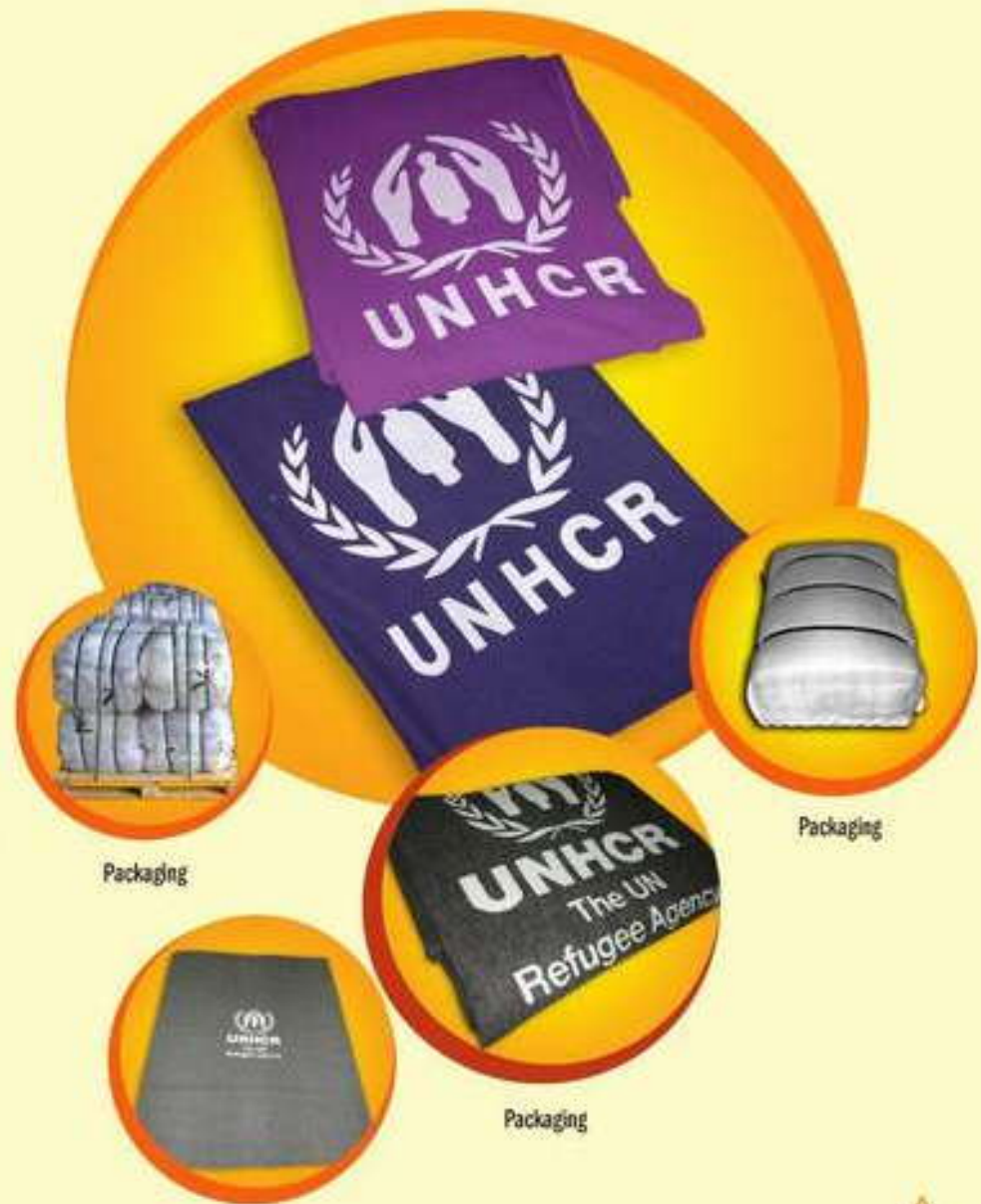
UN / IFRC Registered Logo



Blanket, Synthetic (Fleece)

High Thermal (UNHCR / IFRC / ICRC TYPE)

| | |
|--|--|
| Material | Synthetic blankets are made of virgin fibers from polyester or acrylic materials. Some cotton may be included in the yarns. |
| Make | Knitted or woven, dry raised both sides, homogeneous. |
| Content | 100% virgin polyester and/or acrylic fibers or polyester/cotton. |
| Dimensions / Size | 150 x 200 cm +3% / -1%. To be taken on flat stabilized sample, without folds. |
| Weight | 500 to 850 g/m ² . Weight determined by total weight/total surface. |
| Thickness | 5 mm minimum (1 kPa on 2000mm ²) |
| Tensile strength | 250 N warp and weft minimum. |
| Tensile strength loss after washing | Maximum 5% warp and weft after 3 consecutive machine washing at 30°C and one flat drying. |
| Shrinkage | Maximum 5% warp and weft after 3 consecutive machine washing at 30°C and one flat 5% after 3 consecutive machine washing at 30°C and one flat drying. |
| Weight loss after washing | Maximum 5% after 3 consecutive machine washing at 30°C and one flat drying. |
| Thermal resistance | TOG 4.0 (or 0.4 m ² K/W) minimum, rounded to the nearest 0.1, passed on samples picked from compressed bales after 3 consecutive machine washing at 30°C and one flat drying. |
| Resistance to air flow | Maximum 1000 L/m ² /s. |
| Finish | Whipped seam at 10 mm from the edge with 10 to 13 stitches/10 cm or stitched ribbon or hemmed on 4 sides. |
| Organoleptic test | No bad smell, not irritating to the skin, no dust. 4<pH<9. Free from harmful VOC (Volatile Organic Components). Fit for human use. |
| Fire resistance | Resistance to cigarette - No ignition. |
| Fire resistance | Resistance to flame - No ignition. |
| Colors | Other than black, red, or white, dark uniform color (i.e. dark blue, grey or brown). |
| Packing | High Thermal Synthetic Blankets are packed in bales of 15 pieces and the gross weight per bale is 27.5 kg approx. |



UN / IFRC Recognized Label



Quilt (UNHCR / IOM TYPE)

Specifications

| | |
|--------------------|--|
| Thickness | 60" x 95" |
| Weight | 7 cm |
| Fabric Composition | 2.47 kg 5% + under tolerance |
| Colour | 30x30/76x68 Poly Cotton |
| Filling | Dark Blue |
| Quilting Style | 450 gr/m2, virgin (not allergic) 100% polyester hollow siliconised polyester fiber |
| Thread Count | 12" Diamond Check Quilting |
| Proofing | Thread count per square inch - not less than 133 threads |
| Number of Stitches | Fire retardant fabric Sufficient number of stitches on the quilt to assure perfect attaching between two layers of fabric for maximum durability Made from the same quality and color of the quilt 6 Polyester Quilts are packed in one sealed plastic bag to form one bale. And quilts are quilt compressed in round shape |



Packaging



Reinforced Plastic Tarpaulin

(Sheet 4X5 M)

(UNHCR / UNICEF TYPE)



Size

Finished size of each sheet is 4 x 5 meters.
Effective area: 20.00 m2

Material

made of woven high density black polyethylene (HDPE) fibers, warp x weft: 12/14 x 14/14 per square inch, laminated on both sides with low density polyethylene (LDPE) coating, with reinforced rims by heat sealing on all sides (or 2 sides heat sealing and 2 sides double stitching), and nylon ropes in hem.

Material weight

minimum 190 gr/m2 ± 20 gr/m2.

Tensile strength

minimum 600 N both directions of warp and weft.

Tear strength

minimum 100 N both directions

UV Resistance

Stabilized against ultraviolet rays and excess heat for long outdoor exposure.

Reinforcement eyelets

Provided with strong aluminum eyelets or equivalent on four sheet sides of the single sheets at 100 cm +/- 5cm centre to centre.

Color

White on both sides, with printed UNHCR logo on both sides OR

White on one side, blue (100% Cyan Blue) on the reverse side; white side with blue (100% Cyan Blue) UNICEF logos; blue side with white UNICEF logos.

Packing

Plastic tarpaulin sheets are packed in bales of 5 pieces and secured with polyester bands.

Expected lifespan

It is expected that Reinforced Plastic Tarpaulin will maintain sheltering and waterproof capacities for one year under the strongest weather conditions



Packaging

Reinforced Plastic Tarpaulin

(Roll 4X50 M)

(UNHCR / UNICEF TYPE)



Size

Finished size of each sheet is 4 x 50 meters, made of woven high density black polyethylene (HDPE) fibers, warp x weft: 12/14 x 14/14 per square inch, laminated on both sides with low density polyethylene (LDPE) coating.

Material

minimum 190 gr/m2 ± 20 gr/m2.

Material weight

minimum 600 N both directions of warp and weft.

Tensile strength

minimum 100 N both directions

Tear strength

Stabilized against ultraviolet rays and excess heat for long outdoor exposure.

UV Resistance

Only one (01) is allowed along the middle of the sheet, length wise.

Welding

White on both sides, with printed UNHCR logo on both sides OR

Color

White on one side, blue (100% Cyan Blue) on the reverse side; white side with blue (100% Cyan Blue) UNICEF logos; blue side with white UNICEF logos.

Packing

The rolls are packed individually, folded in the middle and wound.

Expected lifespan

It is expected that Reinforced Plastic Tarpaulin will maintain sheltering and waterproof capacities for one year under the strongest weather conditions



Packaging





P.E. Tarpaulin Sheets/Rolls

(ICRC / IFRC / IOM Specs)

Material

Woven high density polyethylene (HDPE) black fibers fabric laminated on both sides with low density polyethylene (LDPE) coating. Reinforced with 6 bands of 7.5cm width made of woven black HDPE fibers fabric and coated outside

Welding

Only one welding in the middle of the sheet, length wise.

Width

4 m standard size \pm 1% net width

Length

Sheet of 6 meter OR Roll of 60 meters

Weight

190g/m² \pm 20g, plus 10% for the reinforcement bands.

Temperature resist

Temperature resistant from -20 to 80 C.

Features

Water, rot, soil and fauna resistant. Long outdoor use life in all climates.

Colour

White sun reflective both sides.



Packaging



Packaging



UN / IFC Recognized Label



Your helping hand across the globe



SYNTHETIC SLEEPING MAT

Specifications

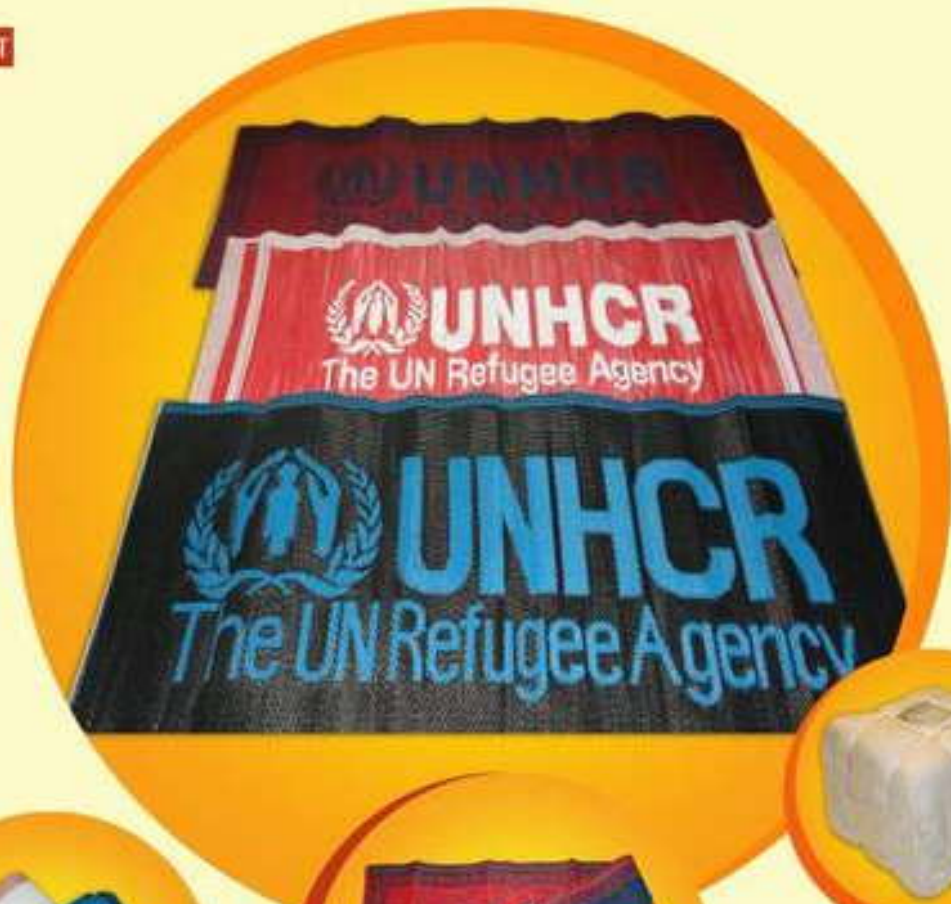
Technical Specification

Material: 100% synthetic yarns from virgin or recycle raw material. Recycle raw materials would be preferable for ecological considerations. Synthetic sleeping mats that are made from recycle materials must not contain fillers, like calcium carbonate or any other. The synthetic yarns in a tightly woven 2/2 twill structure, using a monofilament or multifilament warp and thick tape PP or polyester yarn in weft. The end widths are to be secured with a woven, bias-binding tape with stitches, through the fabric of the mat.

| | |
|-------------------|--|
| Sleeping mat size | 1.8 x 0.9 meters. |
| Sleeping mat area | 1.62m ² . |
| Weight | 0.500 Kg / m ² Minimum +/- 5 %. |
| Color | Assorted colors. |

Packing

Sleeping mats are packed in polypropylene bales of 25 pieces and firmly secured with 4 strong straps.
Weight of packing unit: 20.25 Kg



Folding View



Back View



Packaging



Rectangular Shape (Mosquito Net)

| | | | | | |
|-------------|---|--------|--------|--------|---------|
| Type | Readymade rectangular bed nets in various sizes provided with straps, loops or metal rings as per request. Alternative sizes can also be offered. | | | | |
| Composition | 100% knitted polyester in white color. Opening is optional | | | | |
| Weight | 100% deniers: 40 g/m ² , 75 deniers: 30g/m ² (36 filaments) | | | | |
| Treatment | Optional (Long Lasting Impregnation / Non Treated) | | | | |
| Sizes | X-Small | Small | Medium | Large | X-Large |
| Width | 70 cm | 100 cm | 130 cm | 160 cm | 190 cm |
| Length | 180 cm | 180 cm | 180 cm | 180 cm | 180 cm |
| Height | 150 cm | 150 cm | 150 cm | 150 cm | 150 cm |



Packaging

Conical Shape (Mosquito Net)

| | | | |
|-------------|--|---------|----------|
| Type | Readymade circular bed nets in various sizes. Alternative sizes can also be offered. | | |
| Composition | 100% knitted polyester in white color and any other color. | | |
| Weight | 100% deniers: 40 g/m ² , 75 deniers: 30g/m ² (36 filaments) | | |
| Treatment | Optional (Long Lasting Impregnation / Non Treated) | | |
| Sizes | Small | Medium | Large |
| Width | 850 cm | 1050 cm | 12500 cm |
| Length | 65 cm | 66 cm | 65 cm |
| Height | 220 cm | 220 cm | 250 cm |

Paramount Net

Long Lasting Insecticidal Mosquito Net

According to WHO standard impregnated with deltamethrin protects from malaria & Dengue

Specifications

Treated Warp Knitted Fabric
100% Polyester Multi-Filament Fibers
Mesh: 161 holes/sq.inch=25 holes/sq.cm
Yarn: 75 OR 100 Denier



Extended Family Hygiene Kit (UNICEF Type)

Description

UNICEF Type Extended Family Hygiene.

Contents

02 Towels 100% cotton, size 18"x30" approx., dark colours. 12 Bars of Lifebuoy Soap 115g each, white. 12 Bars, Sufi Washing Soap, special quality, 250g each. 01 Nail Clipper, Medium size, Korea made. 02 Comb, Nylon, size 7" (approx). 01 Lice comb. 03 Tubes of Tooth Paste, local made, size 70g each. 06 Tooth Brush with caps, 3 adult size, 3 children size. 02 pieces of cotton flannel cloth, highly absorbent, size 1m x 1.5m each, deep red/maroon colour. 01 Mug with handle, made of fresh plastic, 1 liter capacity. 01 Lota (water pot for washroom), medium size, made of fresh plastic.

Packing

01 Soap Dish made of good quality plastic. 01 Soap bar for dish washing, 250 grams each approx. All above items packed in waterproof parachute bag, blue colour with hand strips and Zip.

Family Hygiene Kit (UNICEF Type)

Description

UNICEF Type Family Hygiene.

Contents

01 Towels, size 18"x30" approx., good quality. 02 Bars of Lifebuoy Soap 115g each, white. 02 Bars, Sufi Washing Soap, special quality, 250g each. 01 Nail Clipper, Medium size, Korea made. 01 Comb, Nylon, size 7" (approx). 02 Tubes of Tooth Paste, Colgate/Sparkle brand, 70gms. 02 Tooth Brush with caps, good quality. 01 Cotton Roll of 100g. 02 pieces of cotton flannel cloth, highly absorbent, size 1m x 1.5m each, deep red/maroon colour. 01 Mug with handle, made of fresh plastic, 1 liter capacity. 01 Lota (water pot for washroom), medium size, made of fresh plastic.

Packing

All above items packed in waterproof parachute bag, blue colour with hand strips and Zip.



Packaging



Kitchen Set (UNHCR Type)

| | |
|--------------------------|---|
| Description | UNHCR Type Kitchen Sets for a family of 5 persons 1 x 7 liters aluminum cooking pot with lid & 2 cast aluminum handles 1 x 5 liters aluminum cooking pot with lid & 2 cast aluminum handles 5 x deep stainless steel plates |
| Contents | 5 x stainless steel cups 5 x stainless steel table spoons 1 x kitchen knife with stainless steel blade 1 x stainless steel serving spoon |
| Packing | All above items packed in a carton box |
| Weight per carton | 3.40 Kgs (approx.) |
| Volume per carton | 0.014 Cbm (approx.) |

Kitchen Set (IFRC Type)

| | |
|--------------------------|--|
| Description | IFRC Type Kitchen Sets for a family of 5 persons 1 x COOKING POT, 7Liters (frying pan lid fits) stainless steel 1 x FRYING PAN, 2.5Liters, used as lid for the 7L cooking pot) stainless steel 1 x COOKING POT, 5L, with lid stainless steel 5 x BOWL, 1l, metallic stainless steel 5 x PLATE, 0.75l, metallic stainless steel 5 x CUP, 0.3l, metallic stainless steel 5 x SPOON, table, 15ml, stainless steel |
| Contents | 5 x FORK table, 20cm, stainless steel 5 x KNIFE, table, 17cm, stainless steel 1 x KNIFE, kitchen, 15cm stainless steel blade 1 x SPOON, wooden, stirring 30cm 1 x SCOURING PAD |
| Packing | All above items packed in a carton box |
| Weight per carton | 4.80 Kgs (approx.) |
| Volume per carton | 0.020 Cbm (approx.) |



Packaging



Shelter Tool Kit

(IFRC / ICRC Standard)

Specifications

| | |
|-------------|--|
| Rope | 1 x ROPE, polypropylene, black, 12 mm diam., twisted, in bundle 30 m |
| Handsaw | 1 x HANDSAW, for timber, 550 mm, wooden handle |
| Nail | 0,5 KG NAIL, FOR ROOF SHEETS, galvanized with rubber washer, umbrella type |
| Shovel | 1 x SHOVEL, round point with Y handle |
| Hoe | 1 x HOE, with long handle, large type |
| Machete | 1 x MACHETE, wooden handle |
| Shears | 1 x SHEARS, straight, for metal sheet, semi-hard, 250 mm |
| Nail | 0,5 KG NAIL, iron, for wood, large |
| Nail | 0,5 KG NAIL, iron, for wood, small |
| Tie Wire | 1x TIE WIRE, galvanized, diam. 1,5 mm, 25 m, roll |
| Claw Hammer | 1x CLAW HAMMER, min 750 g/s |

Packaging

| | |
|--------------|---|
| Packing Unit | Square rectangular base duffle bag made of standard ICRC/IFRC tarpaulin with 6 steel eyelets and a 10mm PP rope for closing All the items covered by a double corrugated cardboard Color : white |
|--------------|---|

| | |
|--|---|
| Packed Qty Per Packing Unit | 1 pcs |
| Dimensions Weight Volume Of Packing Unit | Approx. 120 x 30 x 15 cm 11 kg 0,054 m3 |
| Packed Qty Per Pallet | 50 pcs per metal stackable pallets with a plywood board at the bottom |
| Dimensions Weight Volume Of Pallet | 134 x 111 x 112.5 cm 495 kg 1,673 m3 |
| Packed Qty Per 20Ft Dc Ctn | 800 pcs |
| Packed Qty Per 40Ft Dc Ctn | 1800 pcs |
| Packed Qty Per 40Ft Hc Ctn | 1800 pcs |



Packaging



Collapsible Jerry Cans (UNHCR Type)

| | |
|------------------------------|--|
| Material | Food grade LDPE Collapsible water container with a capacity of 10 liters for carrying and storing drinking water. Fitted with with a built-in carrying handle with minimum 9 cm long and 3 cm high, with no sharp edges and a screwable cap. |
| Capacity | 10 Liters |
| Thickness | 0.6 mm (approx.) |
| Weight | 190 - 230 grams |
| Operating temperature | -20c to +50c |
| Colour | Transparent |
| Packing | Pieces per carton: 50. Weight of packing unit: 12 Kg |



Rigid Jerry Cans

| | |
|-----------------|--|
| Material | Food grade HDPE water container with a capacity of 10 to 20 liters for carrying and storing drinking water. Fitted with with a built-in carrying handle with no sharp edges and a screwable cap. |
| Capacity | 10 Liters & 20 Liters |
| Weight | 400 grams for 10 Liter Jerry Can 650 grams for 20 Liter Jerry Can |
| Colour | White and /or Transparent |
| Logo | Buyers logo can be printed as per requirement. |



HEAVY DUTY PLASTIC BUCKET (UNHCR TYPE)

| | |
|-----------------|---|
| Material | Made of HDPE (High Density Poly Ethylene) or Polypropylene, with lid. |
| Capacity | Easy to carry with a plastic roller grip strongly fixed to the bucket. 10 Liters & 15 Liters |
| Weight | 500 grams for 10 Liter Bucket 800 grams for 15 Liter Bucket |
| Colour | White |



Plastic Bucket Oxfam Type

| | |
|-----------------|--|
| Material | Heavy duty plastic bucket with handle and removable lid with clip-on cap |
| Capacity | 14 Liters |
| Colour | Bucket: White / Lid & Handle: Red or Green |
| Weight | 825 grams |



Regular Plastic Bucket

| | |
|-----------------|---|
| Material | Heavy duty plastic bucket with strong steel or plastic handle Available With Lid and Without Lid |
| Capacity | 12 Liters / 20 Liters / 30 Liters |
| Colour | Assorted Colours |
| Weight | 500 grams for 12 Liter Bucket 800 grams for 20 Liter Bucket 1100 grams for 30 Liter Bucket |



CLOTH FOR SANITARY MATERIAL

Specifications

General Information and Description

Sanitary material for use by females (Cloth). 100% cotton flannel fully absorbent.

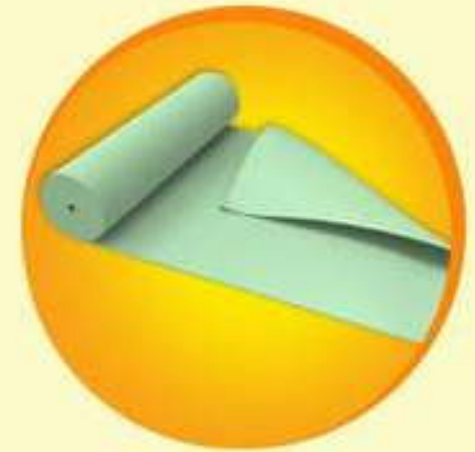
Technical Specifications

| | |
|------------------|---|
| Material | 100% cotton flannel. |
| Weight | 170 - 180 g/m ² . |
| Thickness | before pressing the bale, the thickness is 0.55 mm. |
| Width | 1.5 meter. |
| Warp | min. 21 (threads per cm). |
| Weft | min. 18.5 (threads per cm). |
| Yarn | 30 tex. in warp and 50 tex. in weft +/- 2% |
| PH | 6-8.5. |
| Color | natural. |
| Design | Raised/combed on both sides. |
| Packing | Sanitary material for female use should be packed in bales W 1.5 x L 100m long. Base size: 77 x 52 x 28 cm |



Packaging

Canvas Roll Material for Hot and Dry Climatic Conditions (1.5 m x 70 m)



Denomination and norms

1. Composition, ISO 1833
2. Canvas sheet size
3. Specific weight (g/m²), ISO 3801
4. Weave density
5. Color
6. Water vapor permeability, ISO17229
7. Tensile strength (N), ISO 13934-1 (BS 13934-1)
8. Tear resistance (N) - Started, ISO 9073-4
9. Water penetration resistance, ISO 811
Test pieces of plain canvas.

Denomination and norms

- 90% cotton canvas water and rot proof and 10% polyamide or polyester.
- Width: 1.50 m ±3%
- 640-680 g/m² ±1% in finished state.
- In Warp: 46/48 threads per square inch.
In Weft: 26/28 threads per square inch.
- Natural cotton color, beige sable/ natural beige (not dyed).
- Minimum 2000 g/m²/24h.
- Warp: Minimum of 1600 N.
Weft: Minimum of 1250 N.
- Minimum of 60 N in Warp and Weft
- 30 hPa minimum, with increasing speed at 100 mm per minute



PARAMOUNT TARPAULIN INDUSTRIES



2007-2008



Mr. Mujib Ali, Partner of Paramount Tarpaulin Industries, receiving the PFIET Export Award from Mr. Tahirul Qasim Gilani, Prime Minister of Pakistan



Mr. Yousaf Arif, Managing Director of Paramount Tarpaulin Industries, receiving the PFIET Export Award from Mr. Tahirul Qasim Gilani, Prime Minister of Pakistan



2008-2009

Tents & Shelters

Tarpaulins

Blankets

Mosquito Nets

Food Packages

Hygeine Kits

Kitchen Sets

Jerry Cans

Buckets

Our Offices



Dubai, UAE.



Minnesota, United States



Lusaka, Zambia



Karachi - Pakistan

Factory (Unit 1): D-169, S.I.T.E.,

Tel: +9221 32565447-8-9, 32577239



Karachi - Pakistan

(Unit2): A-20/D, S.I.T.E.,

Tel: 32597716-19 Fax: +9221 32571389



E-Mail: pti@paramounttent.com, sales@paramounttent.com

Web: www.paramounttent.com, www.paramountpak.com